

ELECTRICAL NOTES

- A 1 1/4" U/G CONDUIT CONTAINING 2 #18wg FROM PROXIMITY SWITCH BACK TO MCC. THIS CONDUIT IS ALSO USED FOR TWO 1/4" POLY TUBES TO SUPPLY AIR TO ROLLER UP AND CHAIN TENSION CYLINDERS.
- B 1" U/G CONDUIT FROM ENTERLINK BASE TO POINT OF CAR WASH TICKETS SALES. 250' OF SHIELDED COMMUNICATION CABLE IS PROVIDED WITH ENTERLINK.
- C CUSTOMER INSTRUCTION SIGN HAS 110V 60 W LAMP. SUPPLY WIRE AND CONDUIT AND FEED FROM BUILDING LIGHTING PANEL.
- D 4 PAIR #18 AWG SHIELDED CABLE IN 3/4" CONDUIT FROM ENTERLINK BASE TO MOTOR CONTROL CENTER. THIS IS USED TO SEND MENU SELECTION MADE AT ENTERLINK BACK TO M.C.C.
- E 3 #12 AWG IN 3/4" CONDUIT FROM ENTERLINK BASE TO MOTOR CONTROL CENTER. THIS IS USED TO SUPPLY 110V TO POWER THE ENTERLINK.
- F ENTRANCE TRAFFIC LIGHT. 3/4" CONDUIT CONTAINING 4 #14 AWG FROM LIGHT TO M.C.C.
- G PHOTO EYES. 3/4" CONDUIT CONTAINING 4 #18wg. FROM MCC TO RECEIVER. 3/4" CONDUIT CONTAINING 2 #18wg FROM TRANSMITTER TO RECEIVER.
- H SUPPLY & INSTALL 3 EMERGENCY STOP BUTTONS WIRED IN SERIES BACK TO MCC. SEE LEGEND FOR SPECIFICATIONS.
- I MITTER CURTAIN. RUN CONDUIT AND WIRE OF SUFFICIENT SIZE TO SUPPLY ONE 2HP MOTOR TO WEATHER PROOF JUNCTION BOX ABOVE MITTER. USE LIQUID TIGHT CONDUIT AND FITTINGS FROM J-BOX TO MOTOR. CONNECT TO STARTER IN MCC.
- J 3/4" CONDUIT CONTAINING 2 #14 TO 24V WARNING HORN FROM MCC. SEE LEGEND FOR SPECIFICATIONS.
- K MITTER CURTAIN. RUN CONDUIT AND WIRE OF SUFFICIENT SIZE TO SUPPLY ONE 2HP MOTOR TO WEATHER PROOF JUNCTION BOX ABOVE MITTER. USE LIQUID TIGHT CONDUIT AND FITTINGS FROM J-BOX TO MOTOR. CONNECT TO STARTER IN MCC.
- L TRIPLE FOAMER NEON SIGNS. 3/4" CONDUIT AND 3# 14wg. BACK TO MCC.
- M NEON SIGNS. FROM M.C.C. SUPPLY CONDUIT AND CABLE SUFFICIENT TO SUPPLY THREE NEON PRODUCT SIGNS
- N ROTARY ENCODER (PULSE SWITCH) 3/4" U/G CONDUIT CONTAINING 2 #18wg. FROM J-BOX AT EXIT END OF TRENCH TO MCC.
- O RD400 DRYER. RUN CONDUIT & WIRING OF SUFFICIENT SIZE TO FOUR 10HP MOTORS TO WEATHER PROOF JUNCTION BOX ABOVE DRYER. USE LIQUID TIGHT CONDUIT AND FITTINGS FROM JUNCTION BOX TO MOTORS. CONNECT TO STARTERS IN MCC.
- P 3/4" CONDUIT CONTAINING 3 #14 AWG SHIELDED CABLE FROM DRY CONTACT IN M.C.C. TO JCT BOX LOCATED ABOVE SMART NOZZLE. TO BE USED FOR CONTROL SIGNAL TO SMART NOZZLE.
- Q 3/4" CONDUIT CONTAINING 3 #14 AWG SHIELDED CABLE FROM M.C.C. TO JCT BOX LOCATED ON CEILING ABOVE DRYER. THIS IS TO SUPPLY 110V POWER TO THE SMART NOZZLE.
- R RD200 DRYER. RUN CONDUIT & WIRING OF SUFFICIENT SIZE TO TWO 10HP MOTORS TO WEATHER PROOF JUNCTION BOX ABOVE DRYER. USE LIQUID TIGHT CONDUIT AND FITTINGS FROM JUNCTION BOX TO MOTORS. CONNECT TO STARTERS IN MCC.
- S EXIT TRAFFIC LIGHT. 3/4" CONDUIT CONTAINING 4 #14 AWG FROM LIGHT TO M.C.C.
- T HYDRAULIC POWER PACK (15HP 208V 3 PHASE) PROVIDE CONDUIT AND CONDUCTOR OF SUFFICIENT SIZE TO SUPPLY ONE 15HP MOTOR FROM STARTER IN M.C.C.
- U ELIMINATOR PUMPING STATION. PROVIDE CONDUIT AND CONDUCTOR OF SUFFICIENT SIZE TO SUPPLY ONE 15HP MOTOR FROM STARTER IN M.C.C.

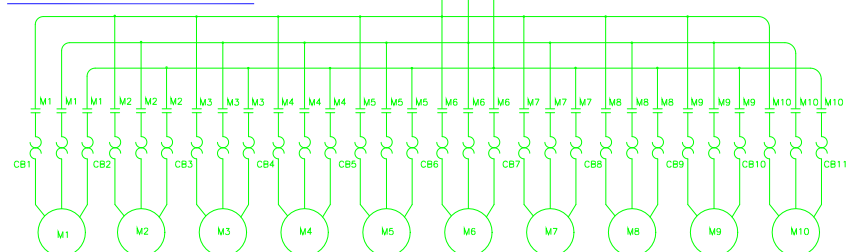
NOTE:

1. USE LONG SWEEP ELBOWS FOR PULLING EASE
2. PROVIDE PULL CORD IN ALL CONDUITS
3. WHERE CONDUITS ENTER CONVEYOR FIT THE INVERT IS TO BE 12" BELOW FINISHED FLOOR.
4. ANY CONDUITS SHOWN OR DESCRIBED ON THIS DRAWING ARE TO BE HEAVY WALL METAL IN WASH BAY & THIN WALL METAL IN MECHANICAL ROOM AND TO BE SUPPLIED & INSTALLED BY ELECTRICAL CONTRACTORS
5. REFER TO WIRING SCHEMATICS IN M.C.C. FOR INFORMATION REGARDING FINAL TERMINATIONS AT MOTOR STARTERS AND CAR WASH CONTROLLER INPUTS.
6. USE ONLY NEMA 3R RATED METAL JUNCTION BOXES
7. ALL CONDUCTOR TO BE THIN RATED
8. ELECTRICIAN TO SUPPLY AND INSTALL DISCONNECT SWITCHES AS PER LOCAL CODES.

LEGEND

- MCC DENOTES CONDUIT HOME RUN BACK TO MOTOR CONTROL CENTER (MCC) UNLESS NOTED OTHERWISE.
- U/G DENOTES MOTOR CONTROL CENTER UNDER GROUND
- EMERGENCY PUSH BUTTON STATION SPEC ALLEN BRADLEY BOOT SERIES SINGLE HOLE ENCLOSURE C/W RED FX60X MUSHROOM HEAD BUTTON & EMERGENCY STOP TAG
- WEATHER PROOF WARNING HORN SPEC EDWARDS 875-66 24V WEATHER PROOF HORN
- NEMA 3R JUNCTION BOX
- MOTOR - 3 PHASE

MOTOR DISTRIBUTION DIAGRAM

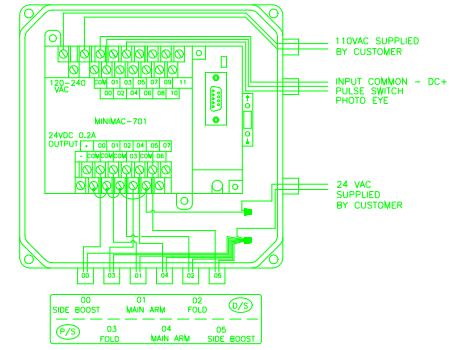
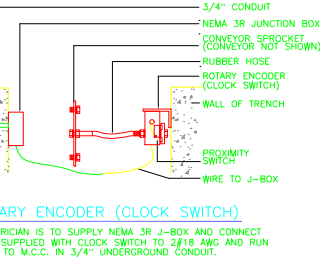
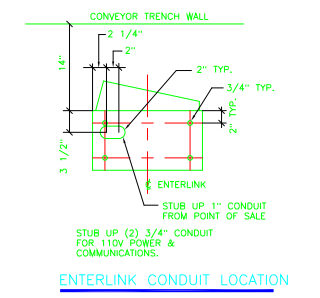
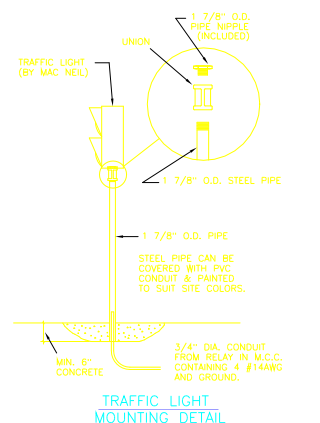
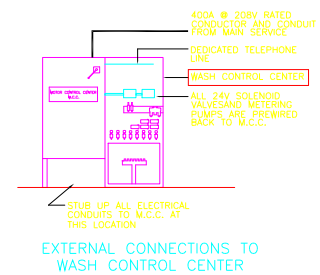


MOTOR	DESCRIPTION	H.P.
M1	RM520 MITTER	2.0
M2	RM520 MITTER	2.0
M3	DRYER #1	10.0
M4	DRYER #2	10.0
M5	DRYER #3	10.0
M6	DRYER #4	10.0
M7	DRYER #5	10.0
M8	DRYER #6	10.0
M9	HYDRAULIC POWER PACK	15.0
M10	ELIMINATOR	15.0

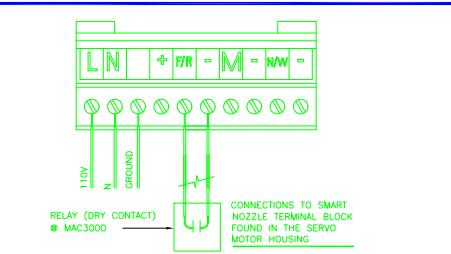
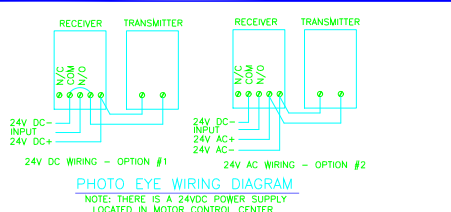
CONFORM TO ALL LOCAL CODES

THE PLAN BEARING THIS LEGEND AND THE ACCOMPANYING SPECIFICATIONS HAVE BEEN PREPARED BY MACNEIL WASH SYSTEMS LTD. FOR THE PARTY WHOSE NAME APPEARS IN THE TITLE BOX IN CONNECTION WITH THE PROPOSED ERECTION OF AN AUTOMATIC CAR WASH AT THE LOCATION SHOWN THEREON. SAME ARE THE EXCLUSIVE PROPERTY OF MACNEIL WASH SYSTEMS LTD. AND ARE SUBJECT TO RETURN UPON DEMAND, BY THE ACCEPTANCE HEREOF, THE PROSPECTIVE CUSTOMER THEREBY AGREES NOT TO DIVULGE, USE OR COPY THE SAME WITHOUT THE WRITTEN CONSENT OF MACNEIL WASH SYSTEMS LTD. THE INFORMATION CONTAINED HEREIN IS SUBMITTED IN GOOD FAITH AS AN ASSISTANCE IN LAYING OUT THE CAR WASH. WE WILL NOT BE RESPONSIBLE FOR ERRORS OR OMISSIONS HEREIN, NOR LEGAL CODE OF UNDERWRITING REQUIREMENTS.

No.	By	Description	Date
8			
7			
6			
5			
4			
3			
2			
1			
0			
REVISION			



MINIMAC 701 CONTROLLER



MACNEIL WASH SYSTEMS LIMITED
 90 WELHAM ROAD, BARRIE ONTARIO, L4N 8Y4 CANADA
 CUSTOMER: **MOYLE PETROLEUM CAR WASH SHERIDAN LAKE RD**
 TITLE: **ELECTRICAL LAYOUT**
 SCALE: DATE: 7 AUG 2001 DRAWN BY: BJ
 MATL: DATE: 7 AUG 2001 CHK'D BY: BJ
 DRAWING REVISION: 0 DRAWING NUMBER: 201147-2