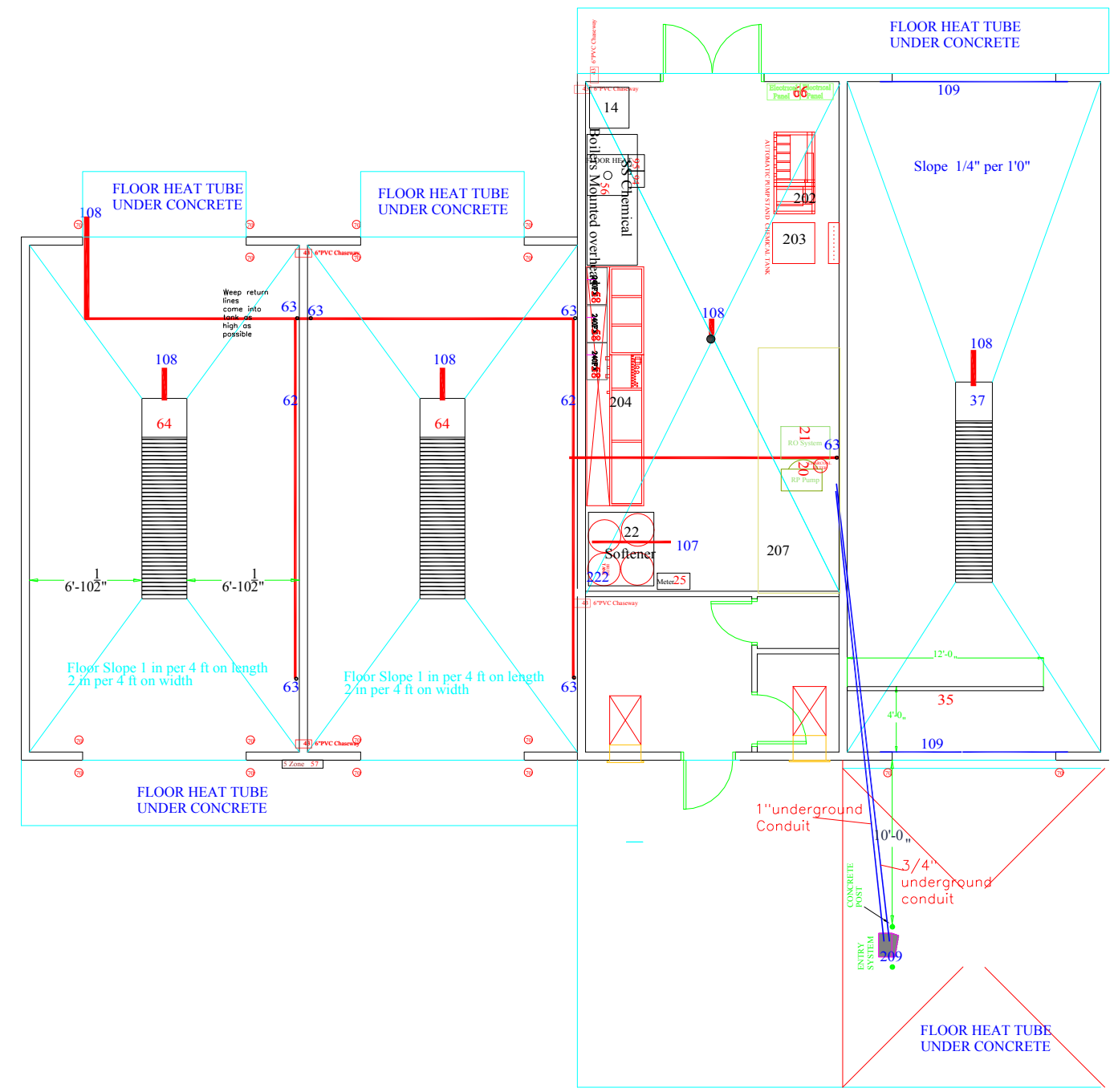
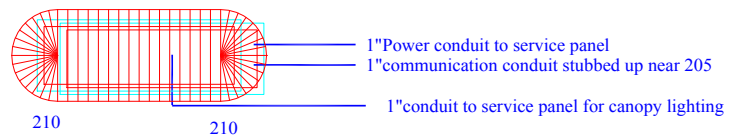


- 37 Automatic bay pit. See detail
- 62 2" PVC to weep reclaim pit
- 63 1 1/2" PVC stubbed up the wall 18"
- 64 Self serve pit. see detail
- 6" concrete filled bullard
- 107 2" drain to sewer
- 108 4" drain to sewer
- 109 1/2" metal conduit half way under concrete. bent up at the ends for heat tape



THE PLAN BEARING THIS LEGEND AND THE ACCOMPANYING SPECIFICATIONS HAVE BEEN PREPARED BY PRESSURE SERVICES, INC. FOR THE PARTY WHOSE NAME APPEARS IN THE TITLE BLOCK IN CONNECTION WITH THE PROPOSED ERECTION OF A CAR WASH AT THE LOCATION SHOWN THEREON. SAME ARE THE EXCLUSIVE PROPERTY OF PRESSURE SERVICES, INC. AND ARE SUBJECT TO A SEVERAL CONSTRUCTION BY THE ACCEPTANCE OF THE PROJECT'S CUSTOMER. THESE PLANS NOT BE REPRODUCED, COPIED OR USED IN ANY MANNER WITHOUT THE WRITTEN CONSENT OF PRESSURE SERVICES, INC. THE INFORMATION CONTAINED HEREIN IS SUBMITTED IN GOOD FAITH AS AN ASSISTANCE IN LAYING OUT THE CAR WASH. WE WILL NOT BE RESPONSIBLE FOR ERRORS OR OMISSIONS HEREIN, NOR LEGAL CODES OR UNDERWRITING REQUIREMENTS.

Pressure Services	
<small>2361 S Plaza Dr Rapid City SD 57702 605-341-5154 Fax 605-341-4843 Watts 800-666-3664</small>	
Customer	Generic1+2
Title	Concrete Details
Drawn By	MJ
Date	1-7-04
Scale	