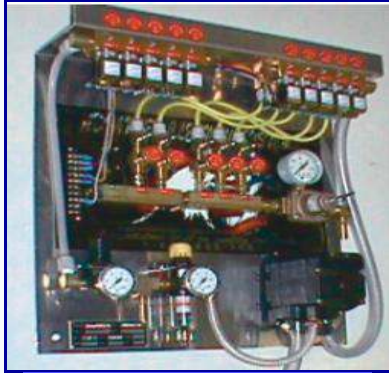


WHEEL CLEANER

All Advanced Cleaning Systems feature high pressure "blow down" allowing you to conserve weep water by blowing out your lines from the comfort of your heated equipment room.



5 Bay Foaming Wheel Cleaner Panel. Above picture shown with optional weep.

STANDARD COMPONENTS

- Air Driven Pump
- Brass Solenoids with metering screws.
- 24 VAC Control
- Easy Mount Wall Panel
- High Pressure Check Valve for each Bay
- All necessary Tubing and Fittings



Additional Options:

- Automatic Stainless Steel Mixing Tank with Hydrominder Mixing Valve
- Optional Weep System for freeze prevention

9361-FLASH

- Foaming Wheel & Tire Cleaner
- Touchless Removal of Brake Dust & Grime
- Safe on all Wheels
- Bright Neon Color with a Mountain Pine Fragrance
- Great for Automatics or Manual Car Wash Systems



9340-Wheel Kleen

- Designed to remove: brake dust, grime and carbon without scrubbing!
- Similar to our popular 'Flash' without color



2361 South Plaza Drive Rapid City, SD 57702
605-341-5154 * 800-666-3664 * 605-341-4843 fax
Visit our web site at: www.pressureservices.com