

FOAM BRUSH SYSTEMS

All Advanced Cleaning Systems are built with high quality valves, solenoids, injectors and regulators. Stainless Steel Booms are standard. Weep Controls and Chemical Tanks with Hydrominder Valves for automatic chemical mixing are optional. All Advanced Cleaning Systems feature high pressure "blow down" allowing you to conserve weep water by blowing out your lines from the comfort of your heated equipment room.

SINGLE AND TRIPLE AIR DRIVEN PUMP Foam Brush Systems

Pump and solenoids are mounted on a panel that mounts to your wall. Separate lines run from the air and chemical solenoids to each foam generator located in the bay to reduce transfer time to the foam brush.



Stainless Steel 180° Wall Boom supplied with all units. This heavy duty boom is made of 304 Stainless Steel and is 6 feet long. The discharge coupling is 1/2+FPT. Boom Bracket mounts to the wall to allow 180° travel.



5 Bay Foam Brush Panel. Above picture shown with optional weep.



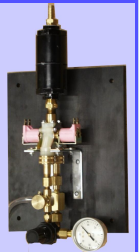
9309-Foam Kleen Gold
9310-Foam Kleen Pink
9316-Foam Kleen Blue
9300-Foam Kleen White



9306-Dyna Foam Pink
9307 Dyna Foam Blue
9309 Dyna Foam Gold



Economy (No Pump Required) Foam Brush System Available



Standard Components

- Air Pump Unit (Air Driven Pump Models Only)
- Foam Generators for each bay
- Brass Solenoids with metering screws. (Air Driven Pump Models Only)
- Brush Handle Assemblies with hoses and swivels
- Stainless Steel Wall Booms
- Brush Buckets to help keep brushes clean
- All necessary Supply Hoses, Tubing & Fittings.

Additional Options

- Optional Weep System for freeze prevention.
- Optional Mixing Tank with HydroMinder Valve
- Bay Instruction Signs
- Single Product Foam Brush System which allows for a single color product or Foam Brush Chemical without color and Fragrance to be used.



2361 South Plaza Drive Rapid City, SD 57702
605-341-5154 * 800-666-3664 * 605-341-4843 fax
Visit our web site at: www.pressureservices.com