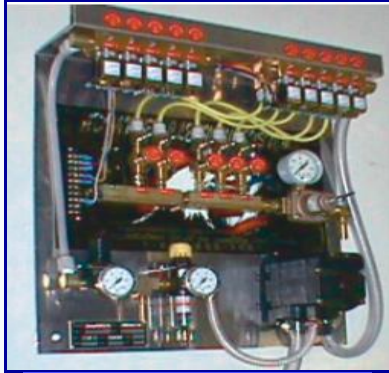


# WHEEL CLEANER

All Advanced Cleaning Systems feature high pressure "blow down" allowing you to conserve weep water by blowing out your lines from the comfort of your heated equipment room.



*5 Bay Foaming  
Wheel Cleaner Panel.  
Above picture shown with  
optional weep.*

## STANDARD COMPONENTS

- Air Driven Pump
- Brass Solenoids with metering screws.
- 24 VAC Control
- Easy Mount Wall Panel
- High Pressure Check Valve for each Bay
- All necessary Tubing and Fittings



## Additional Options:

- Automatic Stainless Steel Mixing Tank with Hydrominder Mixing Valve
- Optional Weep System for freeze prevention

## 9361-FLASH

- Foaming Wheel & Tire Cleaner
- Touchless Removal of Brake Dust & Grime
- Safe on all Wheels
- Bright Neon Color with a Mountain Pine Fragrance
- Great for Automatics or Manual Car Wash Systems



## 9340-Wheel Kleen

- Designed to remove: brake dust, grime and carbon without scrubbing!
- Similar to our popular ðFlashö without color



2361 South Plaza Drive Rapid City, SD 57702  
605-341-5154 \* 800-666-3664 \* 605-341-4843 fax  
Visit our web site at: [www.pressureservices.com](http://www.pressureservices.com)