

M Series | Two Stage Electric

Available with a vertical tank, the M Series air compressors come complete to meet the most demanding industrial applications.



Compressor Pump

- Splash lubricated
- Stainless-steel braided discharge hose
- Large canister intake filter
- Oil level sight indicator

Motor

- 5.0 to 7.5 horsepower low RPM industrial electric motor

Frame

- Powder coated ASME coded 80-gallon receiver tank
- 3/16-inch base plate to reduce vibration
- 14-gauge powder coated totally enclosed heavy-duty belt guard

Components

- ASME safety valves
- Tank pressure gauge
- Intake filter/silencer
- Tank shut-off valve

Standard Features

- Air-cooled after cooler
- Magnetic motor starter
- Low oil level shutdown
- Vibration isolator pads
- Automatic tank drain
- Hour meter



Vertical Models Model Number	CFM @ PSI	Horsepower/Voltage/Amperage/Phase	Pump RPM	Compressor	Tank Size	Dimensions (LxWxH)	Bolt Down (LxW)	Ship Wt.	Net Wt.
	18.0 @ 175	5.0 HP, 230V, 23.0A, 1 Phase	860	Two stage, cast iron	80-gallon	33x25x73in.	15.63x15.63in.	695 lb.	544 lb.
	18.0 @ 175	5.0 HP, 200V, 16.1A, 3 Phase	860	Two stage, cast iron	80-gallon	33x25x73in.	15.63x15.63in.	695 lb.	544 lb.
	18.0 @ 175	5.0 HP, 230V, 13.8A, 3 Phase	860	Two stage, cast iron	80-gallon	33x25x73in.	15.63x15.63in.	695 lb.	544 lb.
	18.0 @ 175	5.0 HP, 460V, 6.9A, 3 Phase	860	Two stage, cast iron	80-gallon	33x25x73in.	15.63x15.63in.	695 lb.	544 lb.
	23.5 @ 175	7.5 HP, 230V, 31.0A, 1 Phase	1250	Two stage, cast iron	80-gallon	33x25x73in.	15.63x15.63in.	780 lb.	709 lb.
	23.5 @ 175	7.5 HP, 200V, 23.0A, 3 Phase	1250	Two stage, cast iron	80-gallon	33x25x73in.	15.63x15.63in.	780 lb.	709 lb.
	23.5 @ 175	7.5 HP, 230V, 20.0A, 3 Phase	1250	Two stage, cast iron	80-gallon	33x25x73in.	15.63x15.63in.	780 lb.	709 lb.
	23.5 @ 175	7.5 HP, 460V, 10.0A, 3 Phase	1250	Two stage, cast iron	80-gallon	33x25x73in.	15.63x15.63in.	780 lb.	709 lb.

Consult dealer for availability of more M Series air compressor models and voltages.

M Series | Two Stage Electric

These standard features are what sets the M Series air compressors apart from our standard line-up.



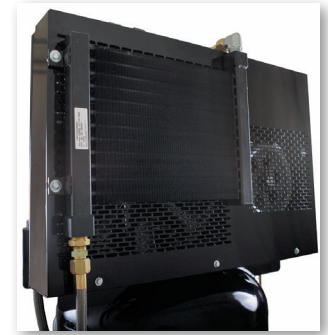
NEMA-4 starter box with magnetic motor starter for thermal overload protection



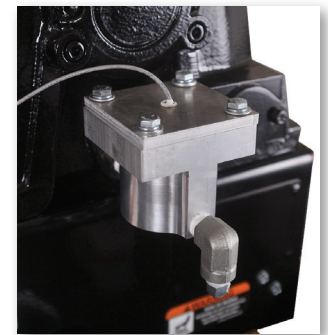
Hour meter displays the number of hours compressor has been in operation



Vibration isolator pads protect the tank from stress



Air-cooled after cooler removes up to 65% of moisture and drops temperature within 10°F of ambient



Low oil sensor does not allow unit to start when oil levels fall below an adequate level



Tank drain automatically drains liquid from air receiver