

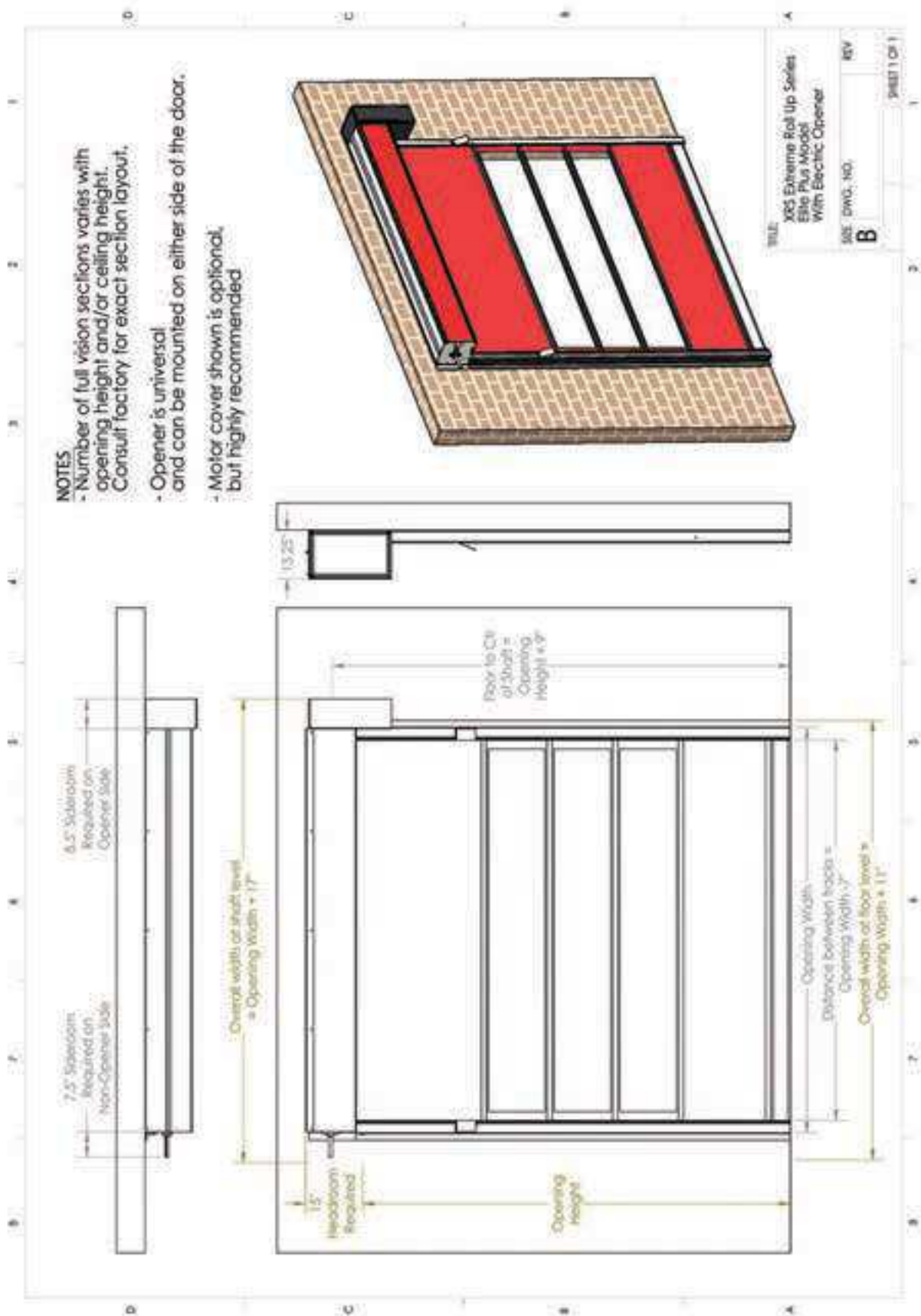
# FORMS

## XRS ELITE PLUS ELECTRIC SHOP DRAWING



AIRLIFT DOORS, INC.

### ELITE PLUS ELECTRIC





AIRLIFT DOORS, INC.

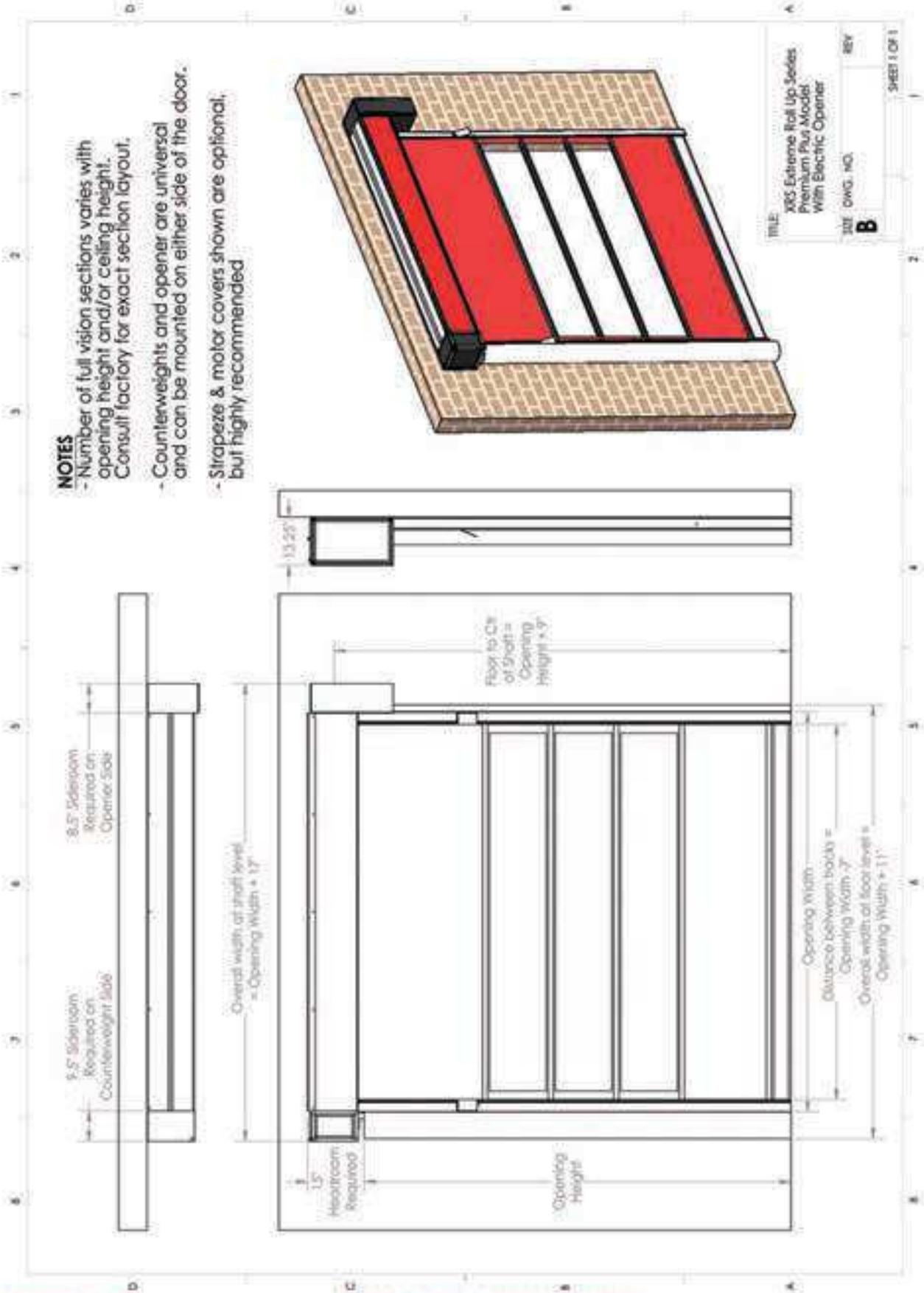
# FORMS

## XRS PREMIUM PLUS ELECTRIC SHOP DRAWING

### PREMIUM PLUS ELECTRIC

#### NOTES

- Number of full vision sections varies with opening height and/or ceiling height. Consult factory for exact section layout.
- Counterweights and opener are universal and can be mounted on either side of the door.
- Strapeze & motor covers shown are optional, but highly recommended



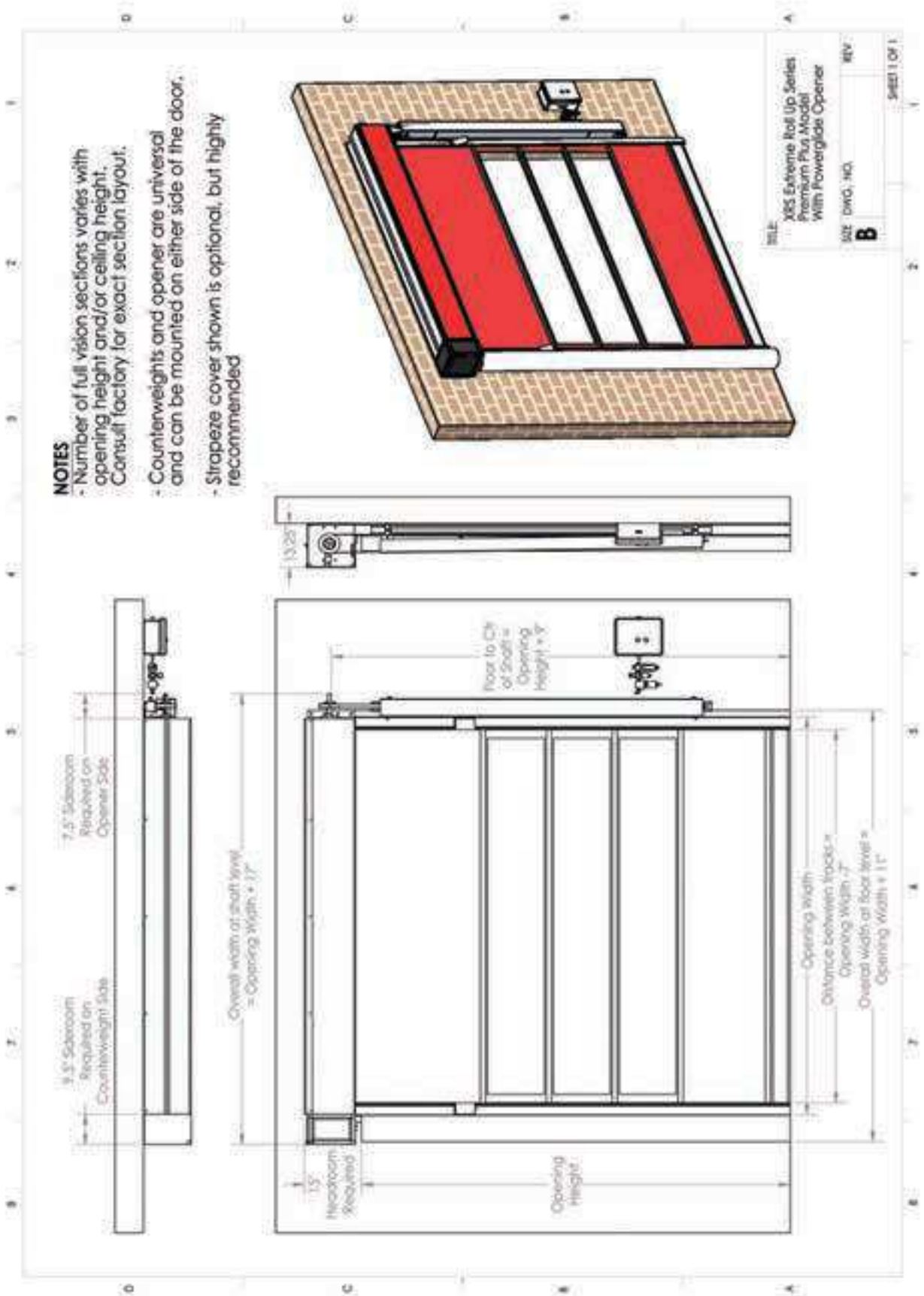
# FORMS

XRS PREMIUM PLUS PNEUMATIC SHOP DRAWING



AIRLIFT DOORS, INC.

**PREMIUM PLUS PNEUMATIC**



**NOTES**

- Number of full vision sections varies with opening height and/or ceiling height. Consult factory for exact section layout.
- Counterweights and opener are universal and can be mounted on either side of the door.
- Stropeze cover shown is optional, but highly recommended

TITLE: XRS Extreme Roll Up Series Premium Plus Model With Powerglide Opener  
 SIZE: DWG. NO. REV  
**B**  
 SHEET 1 OF 1



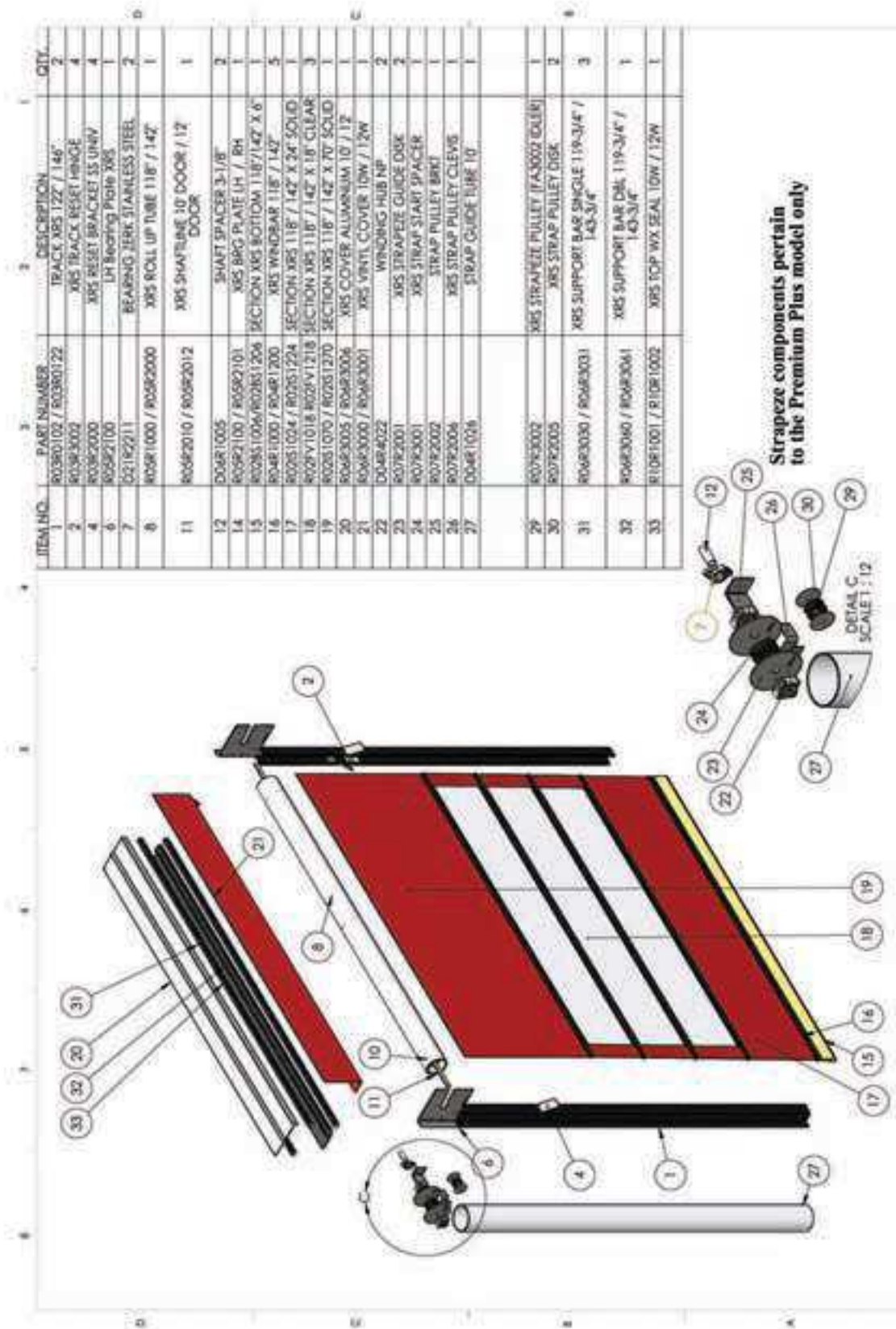


# FORMS

## XRS PREMIUM PLUS PARTS DIAGRAM



### PREMIUM PLUS PARTS DIAGRAM



Strapeze components pertain to the Premium Plus model only

ITEM NO.	PART NUMBER	DESCRIPTION	QTY.
1	80380102 / 80380122	TRACK XRS 122" / 146"	2
2	80383002	XRS TRACK RESET HINGE	4
4	80382000	XRS RESET BRACKET SS UNW / LH	4
6	80382100	LH Bearing Plate XRS	1
7	82182211	BEARING ZERK STAINLESS STEEL	2
8	80881000 / 80882000	XRS ROLL UP TUBE 118" / 142"	1
11	80882010 / 80882012	XRS SHAFTLINE 10" DOOR / 12" DOOR	1
12	80481005	SHAFT SPACER 3-1/8"	2
14	80982100 / 80982101	XRS BRG PLATE LH / RH	1
15	80281006 / 80281206	SECTION XRS BOTTOM 118" / 142" X 6"	1
16	80481000 / 80481200	XRS WINDBAR 118" / 142"	5
17	80281024 / 80281224	SECTION XRS 118" / 142" X 34" SOLID	1
18	80281018 / 80281218	SECTION XRS 118" / 142" X 18" CLEAR	3
19	80281070 / 80281270	SECTION XRS 118" / 142" X 70" SOLID	1
20	80483005 / 80483006	XRS COVER ALUMINUM 10" / 12"	1
21	80483000 / 80483001	XRS VINYL COVER 10W / 12W	1
22	80484022	WINDING HUB NP	2
23	80782001	XRS STRAPEZE GUIDE DISK	2
24	80783001	XRS STRAP START SPACER	1
25	80782002	STRAP PULLEY BRKT	1
26	80782004	XRS STRAP PULLEY OLEVS	1
27	80481006	STRAP GUIDE TUBE 10"	1
29	80783002	XRS STRAPEZE PULLEY (FA3002 OLEVS)	1
30	80782005	XRS STRAP PULLEY DISK	2
31	80483000 / 80483001	XRS SUPPORT BAR SINGLE 119-3/4" / 143-3/4"	3
32	80483000 / 80483001	XRS SUPPORT BAR DBL 119-3/4" / 143-3/4"	1
33	81081001 / 81081002	XRS TOP WX SEAL 10W / 12W	1



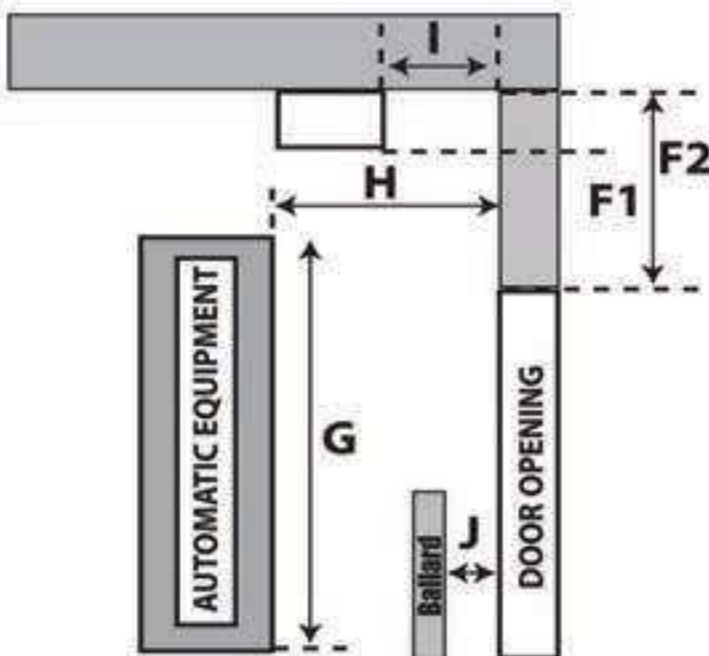
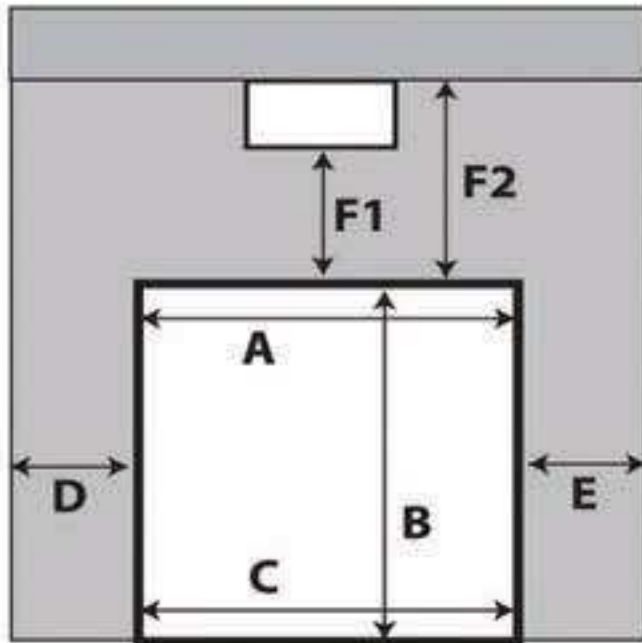


**AIRLIFT DOORS, INC.**  
**4700 OSSEO ROAD - MINNEAPOLIS, MN 55430**  
**PHONE: (612) 529-1000 - FAX: (612) 588-7660**  
**XRS ROLL UP DOOR ENGINEERING FORM**

PLEASE CIRCLE ONE

**ENTER / EXIT / BOTH DOORS**

If any measurements vary please fill out a measurement form for each door opening.



A: Top Opening Width \_\_\_\_\_

B: Finished Opening Height \_\_\_\_\_

C: Bottom Opening Width \_\_\_\_\_

D: Left Sideroom \_\_\_\_\_

E: Right Sideroom \_\_\_\_\_

F1: Headroom to Obstacle \_\_\_\_\_

F2: Headroom to Ceiling \_\_\_\_\_

G: Equipment Height \_\_\_\_\_

H: Backroom to Equipment \_\_\_\_\_

I: Backroom to Obstacle \_\_\_\_\_

J: If ballards exist please provide measurement

from ballard to wall \_\_\_\_\_

Interior or Exterior Mount: \_\_\_\_\_

Wall Material Mounting Track To: \_\_\_\_\_

Motor Mounted On: Driver Side / Passenger Side

Color: \_\_\_\_\_

By signing below I understand that the doors will be engineered specifically to the measurements I have supplied on this form. I take full responsibility for all information supplied on this form.

Reference Quote # \_\_\_\_\_

Signed by: \_\_\_\_\_

Date \_\_\_\_\_

# FORMS

## XRS CONVEYOR CUT-OUT DIAGRAM



AIRLIFT DOORS, INC.

### AIRLIFT DOORS, INC. XRS ROLL UP DOOR CONVEYOR CUT-OUT DIAGRAM

VIEW IS STANDING INSIDE THE  
BAY LOOKING OUT

ENTER THE APPLICABLE  
MEASUREMENTS

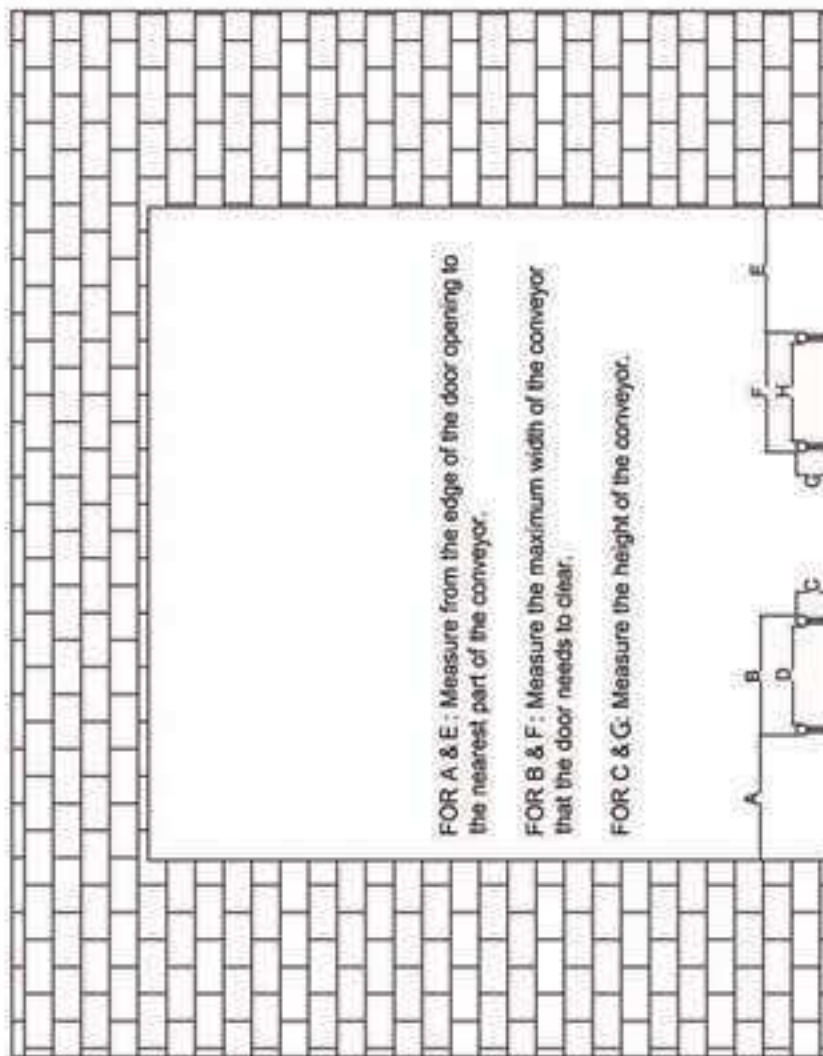
- A. \_\_\_\_\_ (Outside Width)
- B. \_\_\_\_\_ (Outside Width)
- C. \_\_\_\_\_ (Inside Width)
- D. \_\_\_\_\_ (Inside Width)
- E. \_\_\_\_\_ (Outside Width)
- F. \_\_\_\_\_ (Outside Width)
- G. \_\_\_\_\_ (Inside Width)
- H. \_\_\_\_\_ (Inside Width)

OTHER DOOR INFORMATION

I: ENTER OR EXIT DOOR

J: INTERIOR OR EXTERIOR MOUNT

K: CUT OUT NEEDED ON DRIVER'S SIDE,  
PASSENGER SIDE, OR BOTH



FOR A & E: Measure from the edge of the door opening to  
the nearest part of the conveyor.

FOR B & F: Measure the maximum width of the conveyor  
that the door needs to clear.

FOR C & G: Measure the height of the conveyor.

 <b>Airlift Doors, Inc.</b> 4700 Osseo Rd. Minneapolis, MN 55430 1-888-368-4403	XRS Roll-Up Door All Models
	Conveyor Cut-Out Diagram 10/25/10