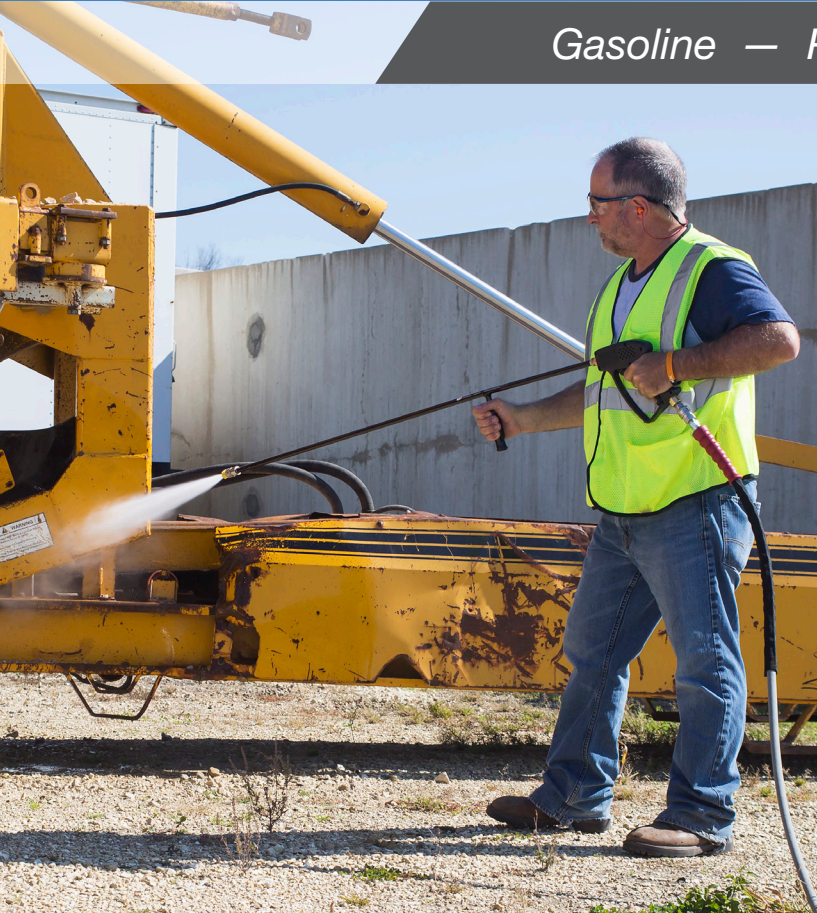




Premium Series

Dealer Cold Water Pressure Washers

Gasoline — Portable with Roll Cage — Belt Drive



One of the most robust cold water pressure washers on the market today, this pressure washer is equipped with a rugged roll cage making it the ideal choice for industrial jobsites where heavy-duty cleaning is a daily requirement.

Pump:

Belt drive triplex piston AR or General pump with ceramic plungers | External bypass system allows more water into the system to protect from heat build-up | Forged brass manifold | Thermal and safety relief valves | Water filter with clear sleeve for screen inspection (High capacity water filter on 3000-PSI model)

Frame:

Powder coated steel frame with 1¼-inch roll cage, handles and lifting hook | 13-inch flat-free tires with locking tire brake | Two-piece belt guard

Engine:

Performance-proven Honda OHV engine with low-oil shutdown

Components:

Fuel tank has powder coated outside and aluminized steel inside to prevent rusting | 13-gallon fuel tank capacity for 9½ hour run time

Unit Includes:

Quick connect nozzles - 0°, 15°, 25° and 40° | 50-foot x ⅝-inch non-marking high pressure hose (½-inch on 3000-PSI model) | 48-inch lance with rubber grip | Professional-grade insulated trigger gun with safety lock-off



Intertek
Certified
to UL-1776

5000-PSI models

Premium Series

Cold Water – Gasoline – Portable with Roll Cage – Belt Drive

MODEL NUMBER	PSI	GPM	DISPLACEMENT/ENGINE	PUMP	UNLOADER	DIMENSIONS (LxWxH)	SHIP WT.	NET WT.
3000	8.0	688cc Honda GX630 OHV, electric start – battery not included	General	Factory preset	43x27.75x36in.	504 lb.	438 lb.	
5000	4.0	688cc Honda GX630 OHV, electric start – battery not included	AR	Factory preset	43x27.75x36in.	499 lb.	433 lb.	
5000	4.0	688cc Honda GX630 OHV, electric start – battery not included	General	Factory preset	43x27.75x36in.	515 lb.	449 lb.	
5000	5.0	688cc Honda GX630 OHV, electric start – battery not included	General	Factory preset	43x27.75x36in.	515 lb.	449 lb.	
6000	3.7	688cc Honda GX630 OHV, electric start – battery not included	General	Factory preset	43x27.75x36in.	515 lb.	449 lb.	
7000	3.8	688cc Honda GX690 OHV, electric start – battery not included	General	Factory preset	43.25x28.5x39.25in.	515 lb.	449 lb.	

Accessories:

PART NUMBER	DESCRIPTION	FITS MODELS
	50-ft. x 1/2-in. high pressure hose - For when you need extra hose for added mobility	3000-PSI model
	50-ft. x 3/8-in. non-marking high pressure hose - For when you need extra hose for added mobility	5000 & 6000-PSI models
	50-ft. x 3/8-in. high pressure hose - For when you need extra hose for added mobility	7000-PSI model
	Rotating nozzle - Increase your cleaning power and decrease your cleaning time, 0° spray with 25° coverage	6000 & 7000-PSI models
	Rotating nozzle - Increase your cleaning power and decrease your cleaning time, 0° spray with 25° coverage	5000-PSI models
	Rotating nozzle - Increase your cleaning power and decrease your cleaning time, 0° spray with 25° coverage	



⚠ WARNING: Cancer and Reproductive Harm - www.P65Warnings.ca.gov.